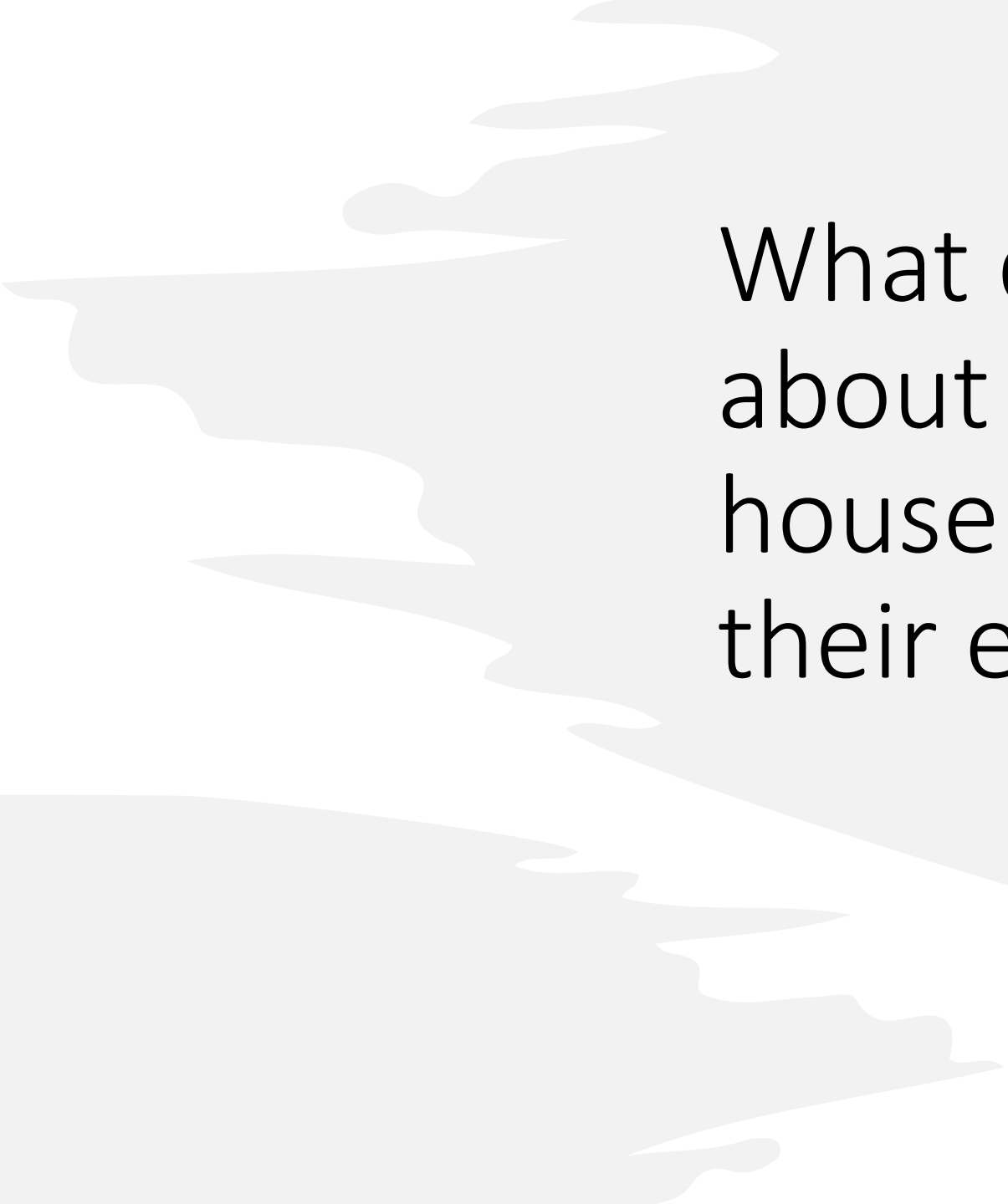




28th Annual Meeting of the RSSB – Hackathon

October 22, 2021

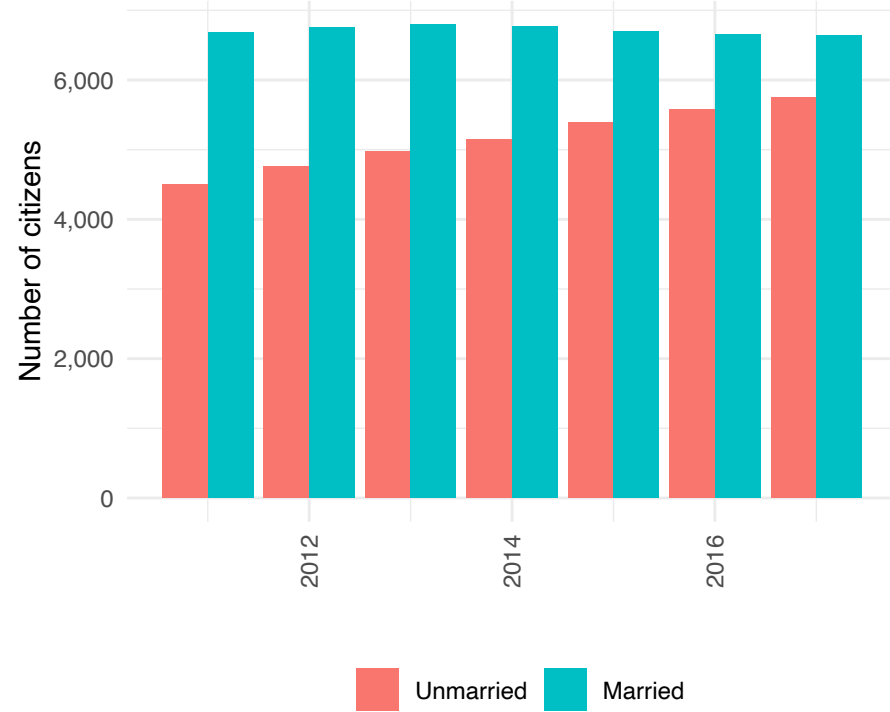
Hugues Annoye, Benjamin Deketelaere,
Alexandre Jacquemain, Antoine Soetewey



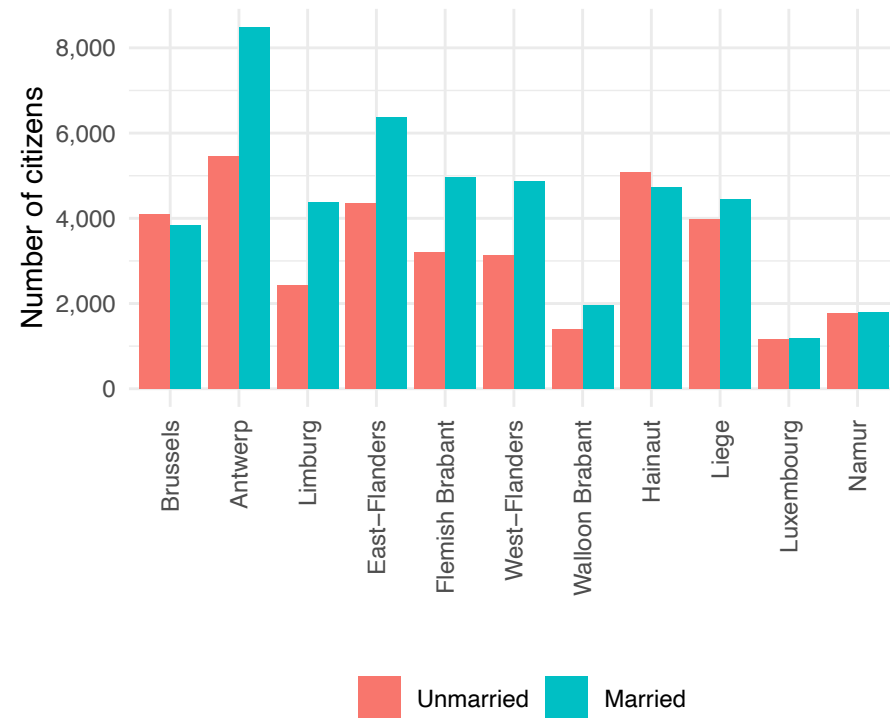
What can be said
about Belgian
households and
their evolution?

Married - Unmarried

By year



By province

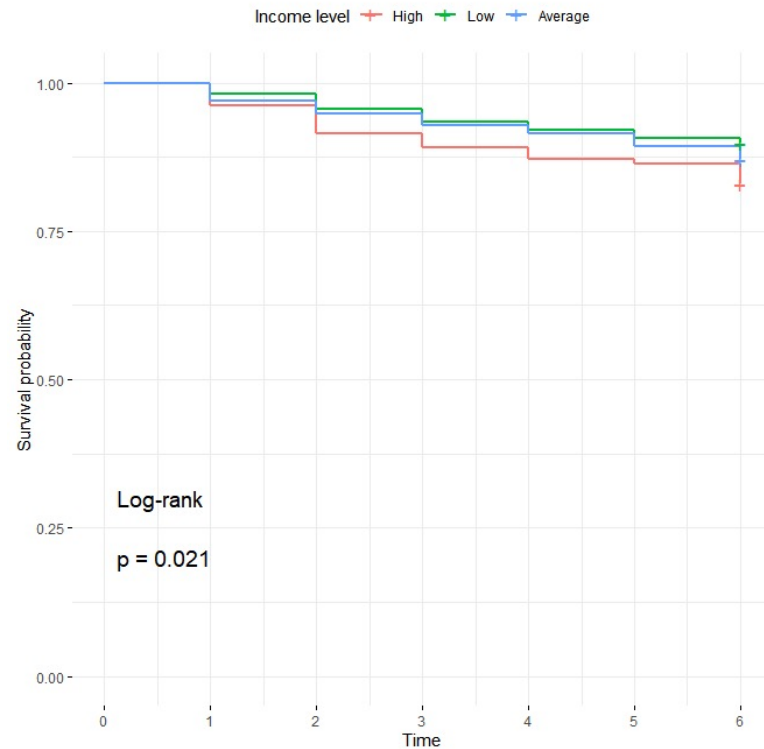


Survival analysis - marriages

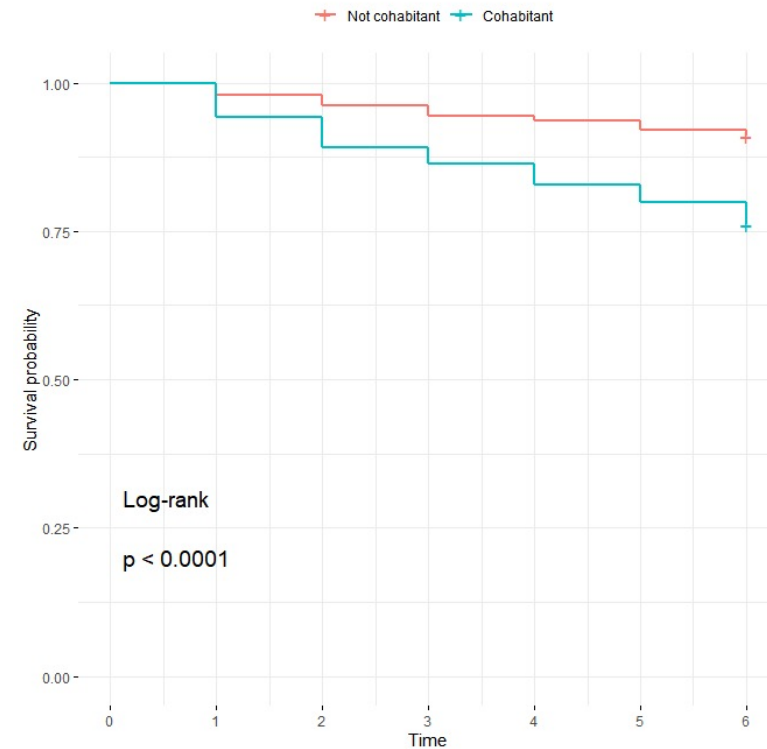
- Focus on households not married in 2011
- Look at number of years before marriage

Kaplan-Meier (1958)

By education



Cohabitant in 2011?



Cox-Model

```
coxph(formula = Surv(timetomariage, delta) ~ Cohab_in_2011 +  
      Income + Nat + Educ, data = data2)
```

	coef	exp(coef)	se(coef)	z	p
Cohab_in_2011TRUE	1.07934	2.94274	0.12962	8.327	< 2e-16
IncomeQ2	-0.78483	0.45620	0.23305	-3.368	0.000758
IncomeQ3	-0.36553	0.69383	0.19581	-1.867	0.061930
IncomeQ4	-0.20982	0.81073	0.18992	-1.105	0.269270
IncomeQ5	-0.27680	0.75821	0.20159	-1.373	0.169733
IncomeNotapp	-0.00553	0.99448	0.33897	-0.016	0.986984
NatEU28	-0.22219	0.80076	0.26931	-0.825	0.409350
NatNOT_EU28	0.89190	2.43975	0.28301	3.151	0.001624
EducLow	-0.40146	0.66934	0.21978	-1.827	0.067758
EducMiddle	-0.29508	0.74447	0.19558	-1.509	0.131371
EducNotapp	NA	NA	0.00000	NA	NA
EducUnknown	-0.28724	0.75033	0.29342	-0.979	0.327609

```
Likelihood ratio test=99.61 on 11 df, p=< 2.2e-16
```

```
n= 2187, number of events= 272
```



Thank you!

Questions?